

Medicine Hat Heritage Resources Committee



John and Jessie Ewart's house under construction in 1887

Heritage Resources Committee 2010



Training with Matthew Francis



St. Patrick's Church National Historic Site



First municipal Designation



Buildings today



St. John's Presbyterian Church



Sandstone challenge



Finlay Bridge



Plaque ceremony



Earl Kitchener School 1916



Heritage Trees Brochure



Duncan's White Pine
70 Lang Cres SW



Native to eastern North America, the Eastern White Pine has an interesting history. Medicine Hat's example is special in its own right. It is well known in arborist circles and was planted by Duncan Hargrave, the famed horticulturalist who was one of the legendary scientists at Brooks Horticultural Research Station. Duncan's White Pine is a real beauty.

Pride and Respect

Hatters are very proud of their Heritage Trees. You are welcome to visit these trees, but please respect the privacy and rights of property owners.

Heritage Trees of Alberta Program is a project of the Heritage Tree Foundation of Canada. The program mission is to increase understanding of the valuable contribution of trees to our society and to inspire stewardship into the future.

For more information please visit:
www.heritagetreefoundation.com

Golden Plume Honey Locust
302 Prospect Dr SW



Honey Locust trees, though not native to the prairies, are excellent ornamentals because of their tolerance for urban life, fast growth and endurance of poor conditions. The two Golden Plume Honey Locusts (on Prospect Drive) are Heritage Trees by virtue of their special interest and fine condition.

What is a Heritage Tree?

Heritage Trees are those of particular interest because of such qualities as their history, age, size, shape, location or other special qualities. Like historic buildings, pioneer families and past events, heritage trees and their stories are a living link to our past. They add to the full picture of our history and community and are a direct connection to people and to nature. Medicine Hat has many trees that could be considered a heritage tree but seven trees have been locally designated as part of the Heritage Trees of Alberta Program.

For more information about the Heritage Resources Committee, please visit the City of Medicine Hat, Planning Building and Development website at:
www.medicinehat.ca

Heritage Trees of Medicine Hat



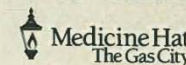
A living history guide

"A society grows great when old men plant trees whose shade they know they shall never sit in." Greek Proverb



**Developed in 2012 by
Heritage Resources Committee
City of Medicine Hat**

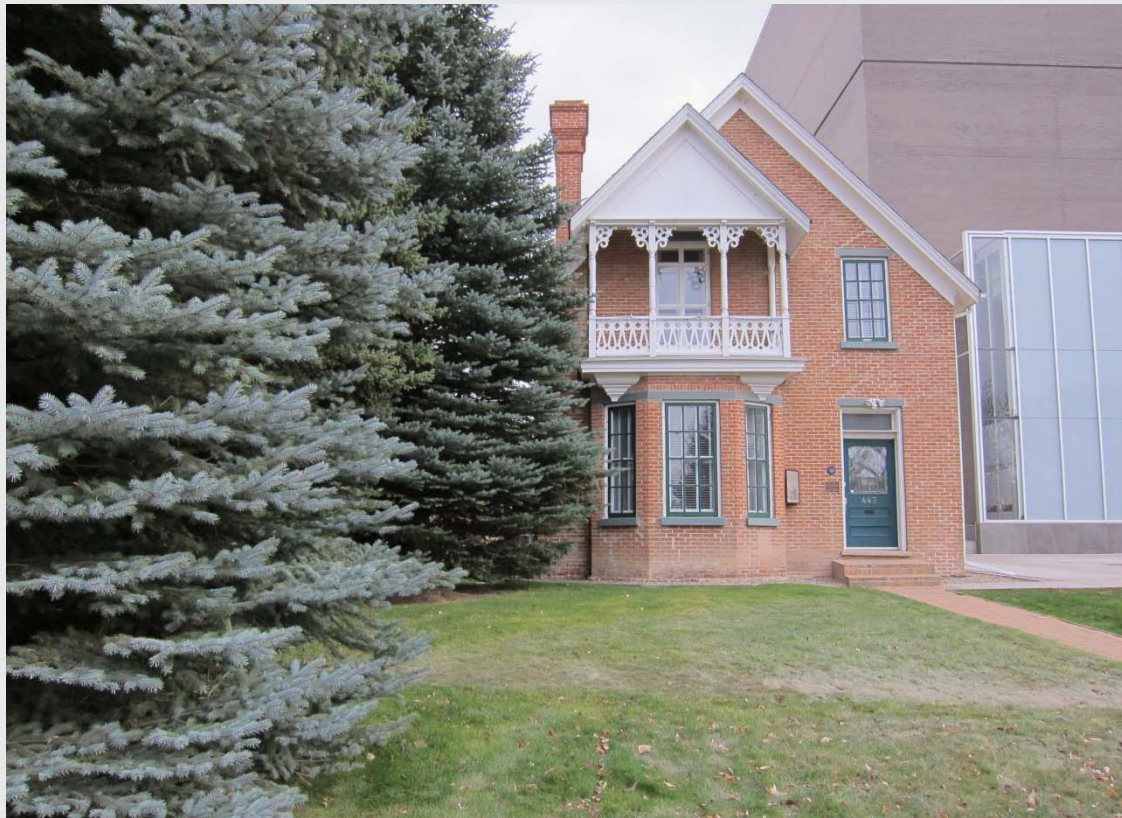
**Co-sponsored by: Medicine Hat
Communities in Bloom**



Ewart house in 1910



Obscured by trees, with lawn



Symbolic rhubarb planting



Trees removed



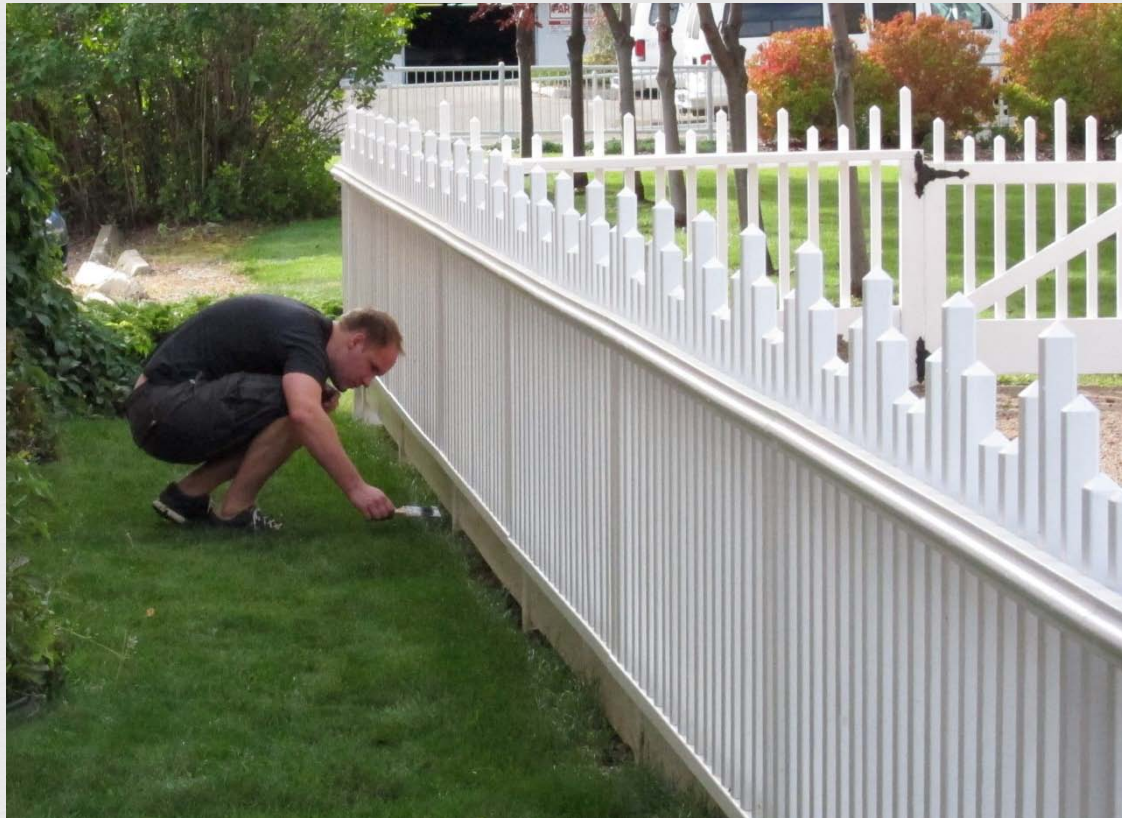
Stripping sod



Original fence



New fence



Where the deer and antelope play



Heritage garden



AHRF Awards



Monarch Theatre



Esplanade



First Street Today



Mix of old and new



Manse



Law Office



Corporate headquarters



Kerr Wallace house



Commercial encroachment



Carriage house gone



Redevelopment risk



Brick renovation



Thank you



- ❧ Photo credits:
- ❧ City of Medicine Hat (historical and committee)
- ❧ James Marshall (First Street photos)
- ❧ Ross Strobel (St. Patrick's)
- ❧ Malcolm Sissons (Ewart Duggan house, Earl Kitchener school)
- ❧ Alli Penner (deer)
- ❧ Ron Keillor (Monarch)