

“Stephen Avenue is a superb illustration of the central role that retail streets have played and continue to play in the Canadian Urban Experience. As a well-preserved commercial street the avenue bears eloquent witness to the emergence of the modern retail sector in Canada from 1880 to 1930....”

Photo Credits

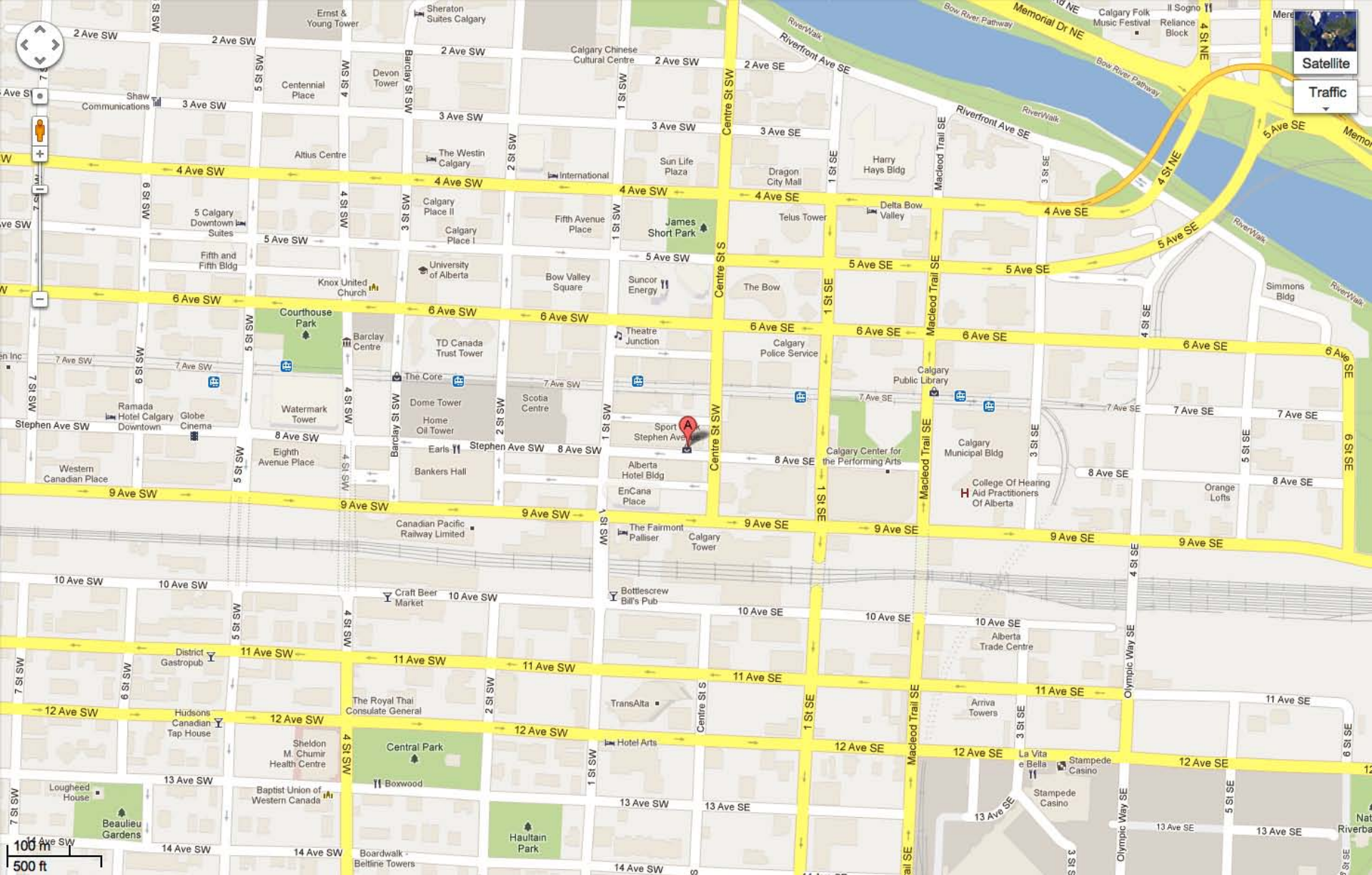
The Glenbow

Calgary Public Library

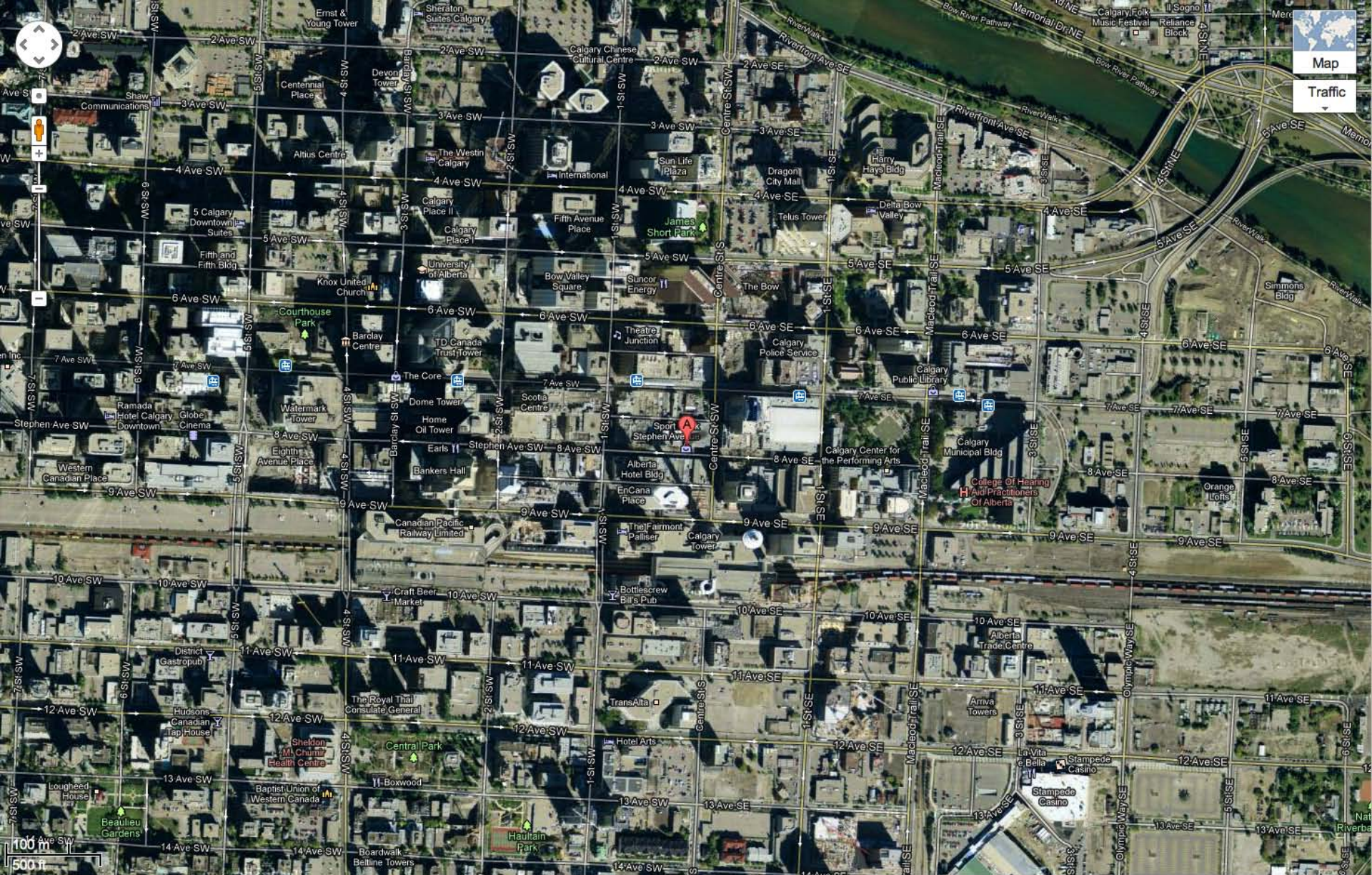
The Internet



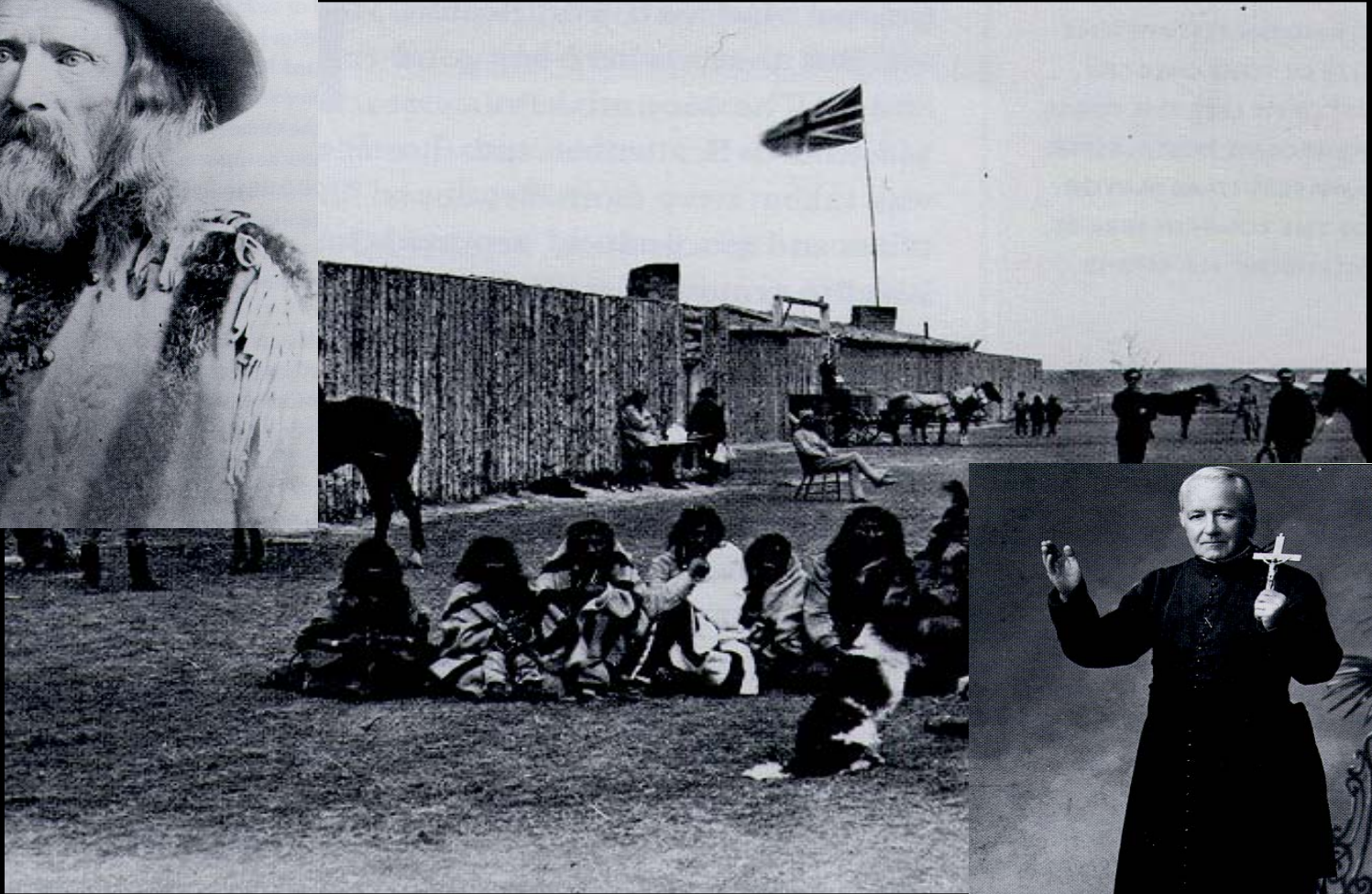




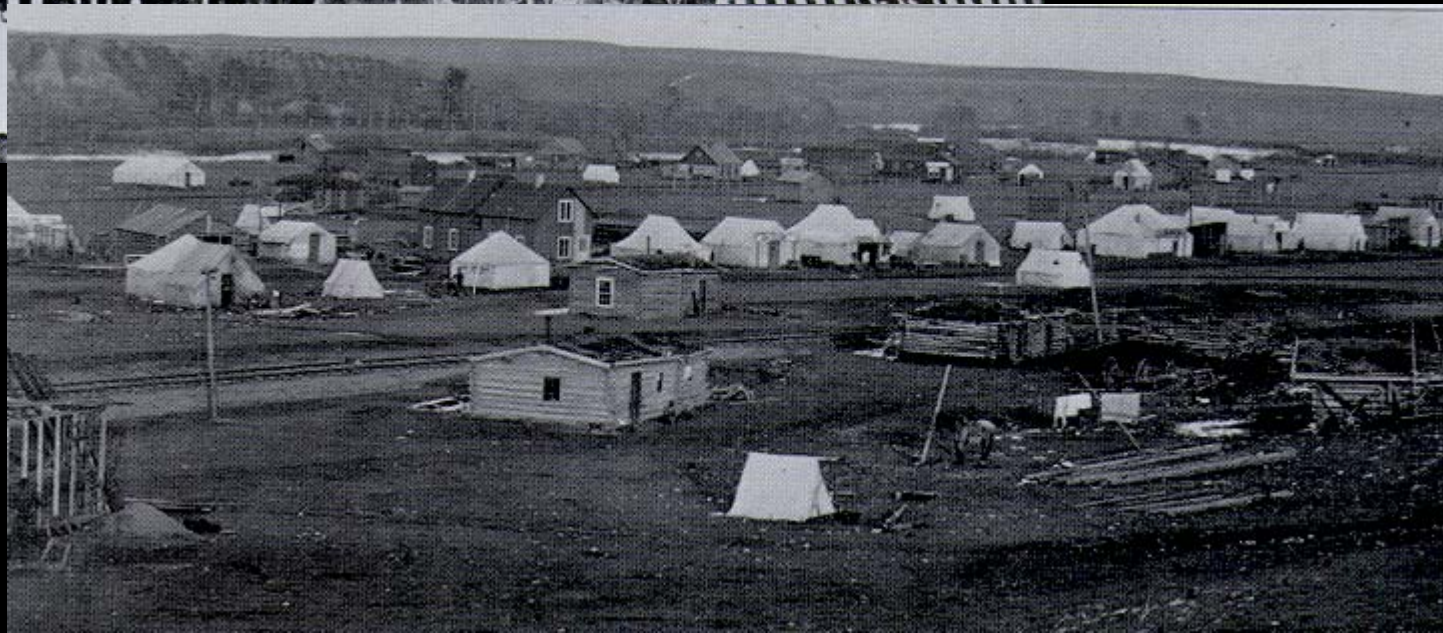
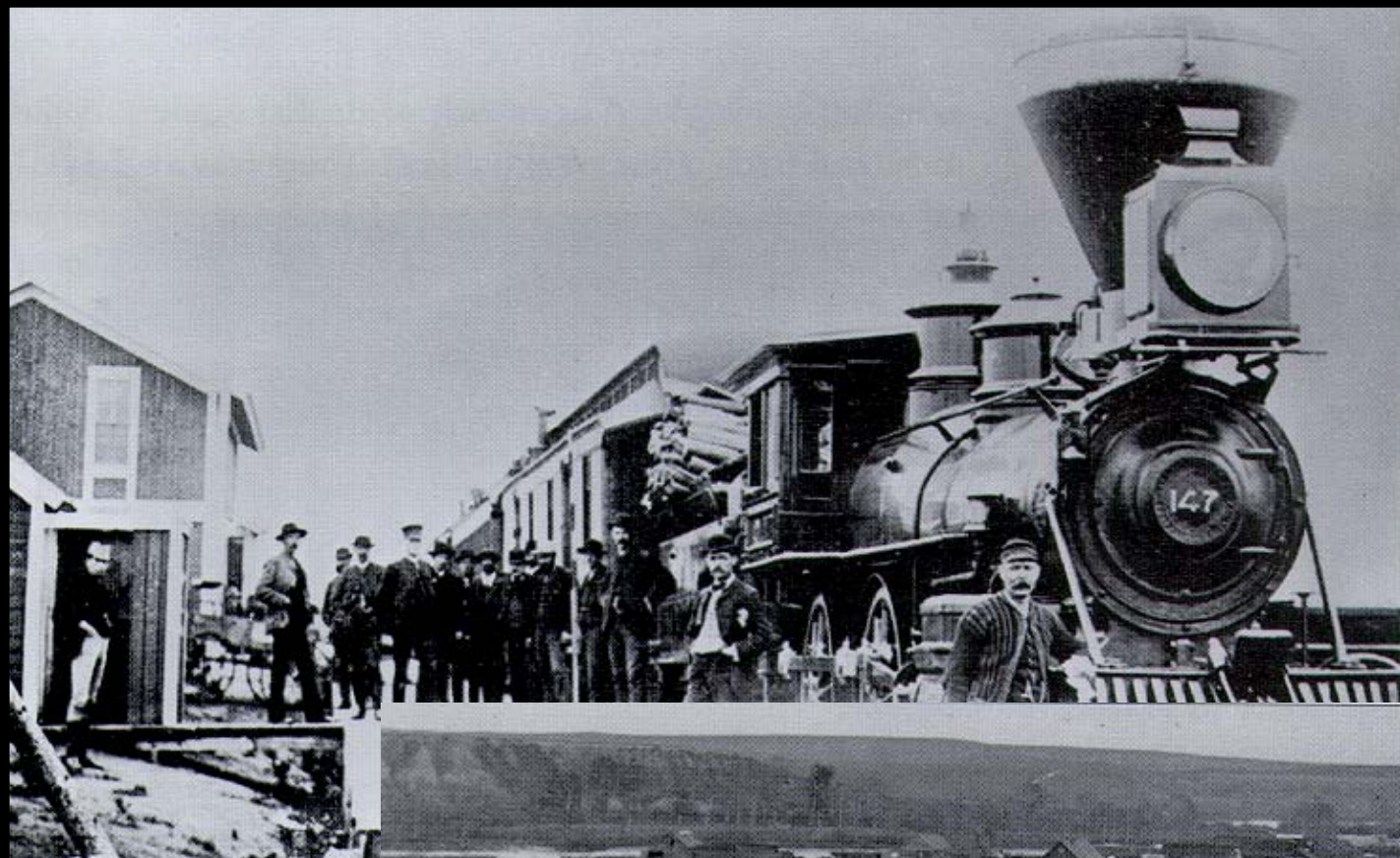


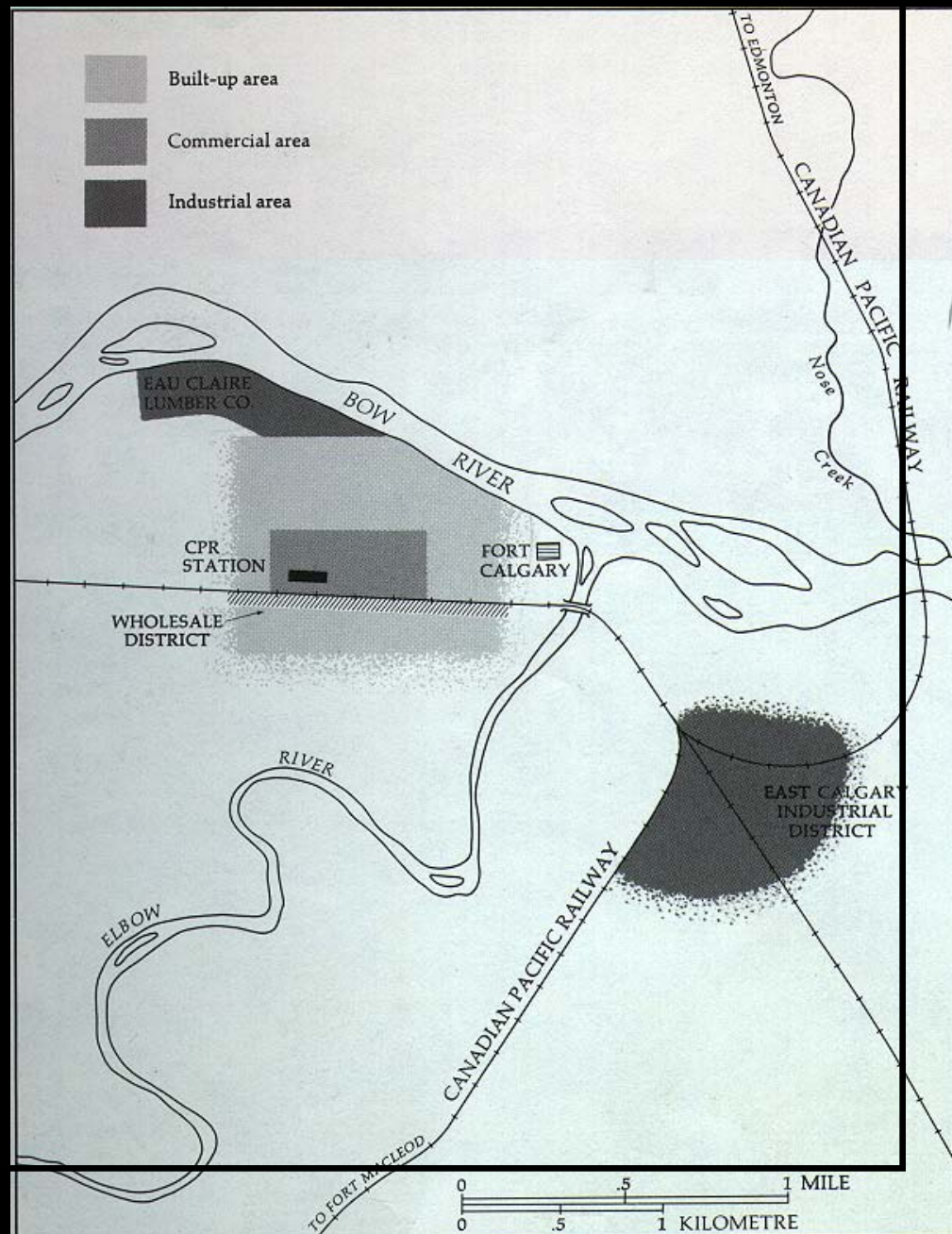
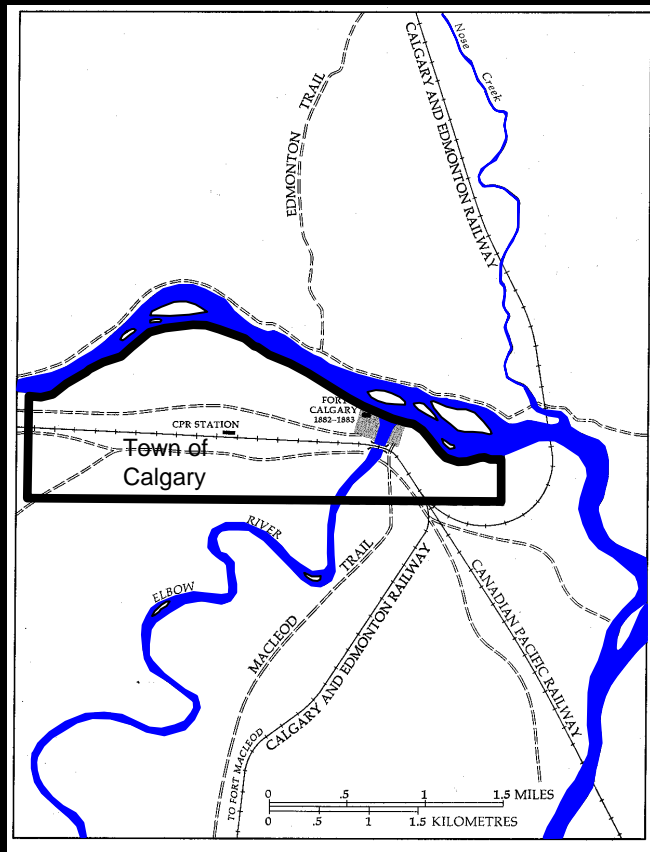




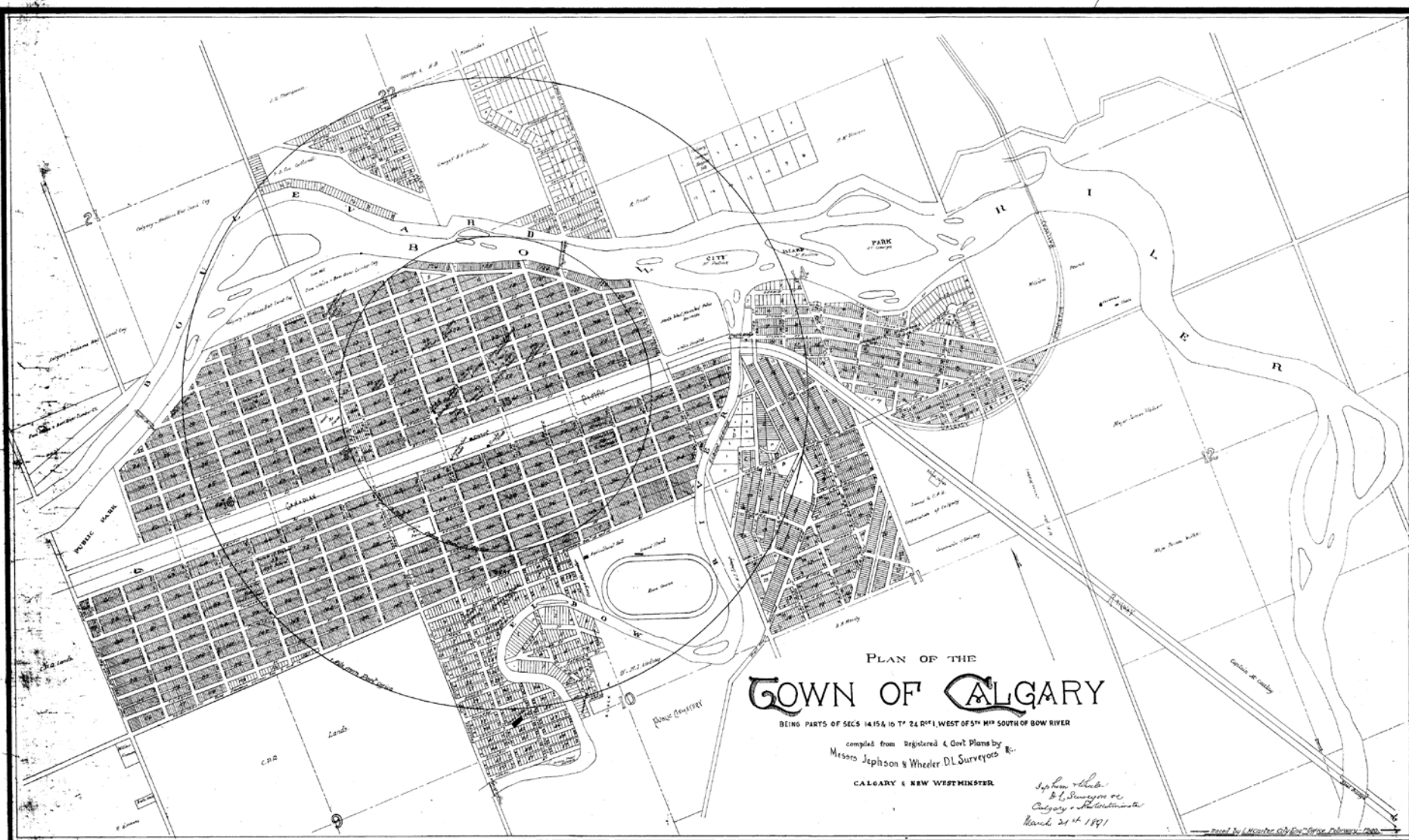
























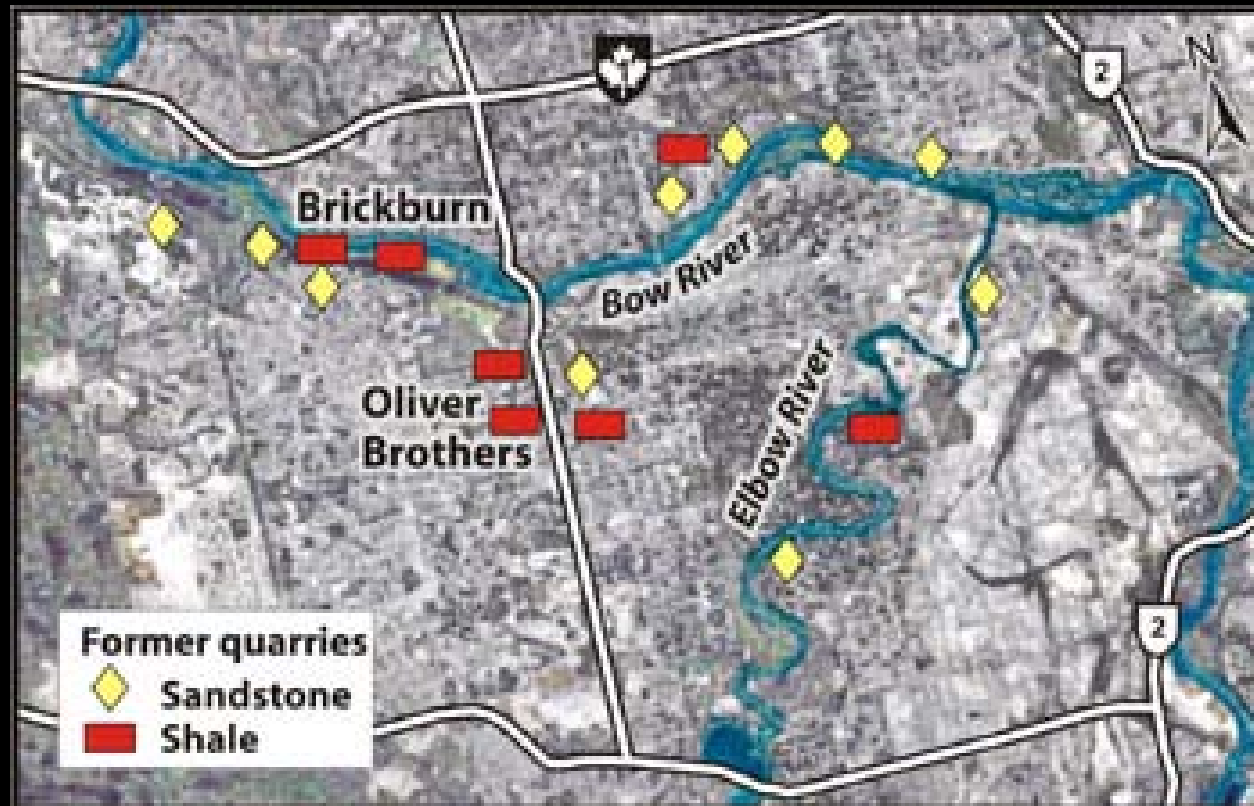
Glenbow Archives NA-354-19



Glenbow Archives NA-644-6





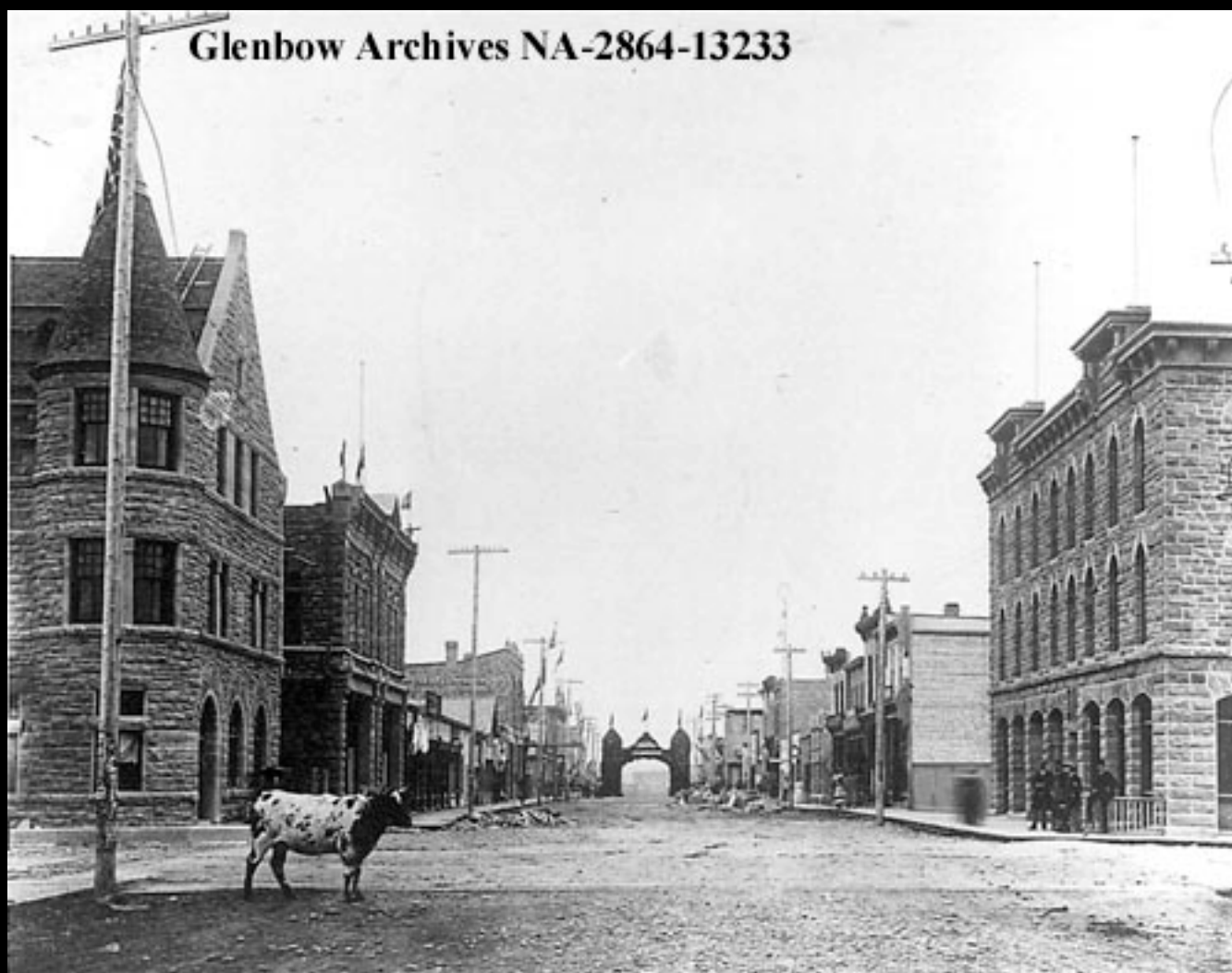




Glenbow Archives NA-1075-6



Glenbow Archives NA-2864-13233









Glenbow Archives NA-4954-45





C.P. R. Depot and Palliser Hotel,  
Calgary, Alberta. Canada.

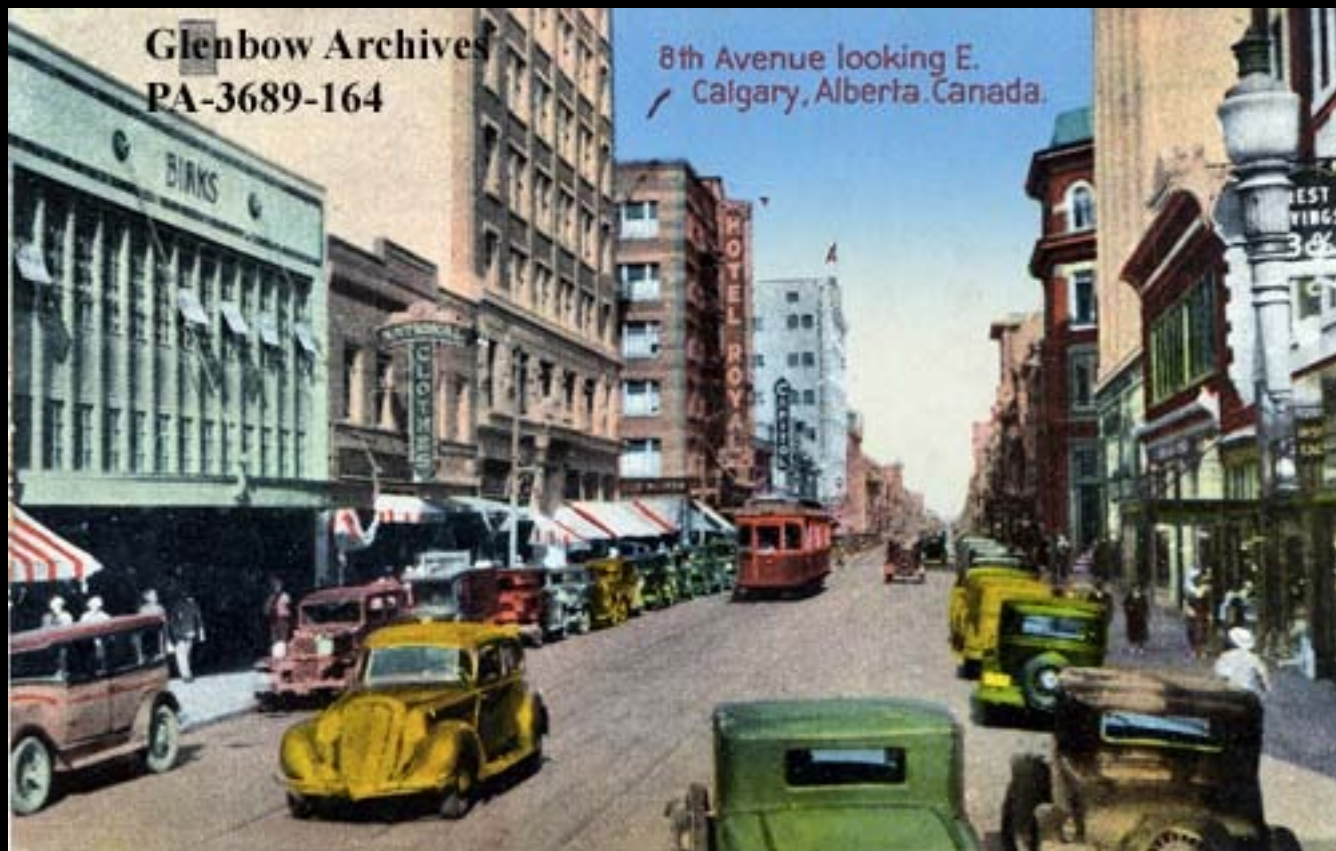






Glenbow Archives  
PA-3689-164

8th Avenue looking E.  
Calgary, Alberta, Canada.











Glenbow Archives PA-3818-122







Glenbow Archives NA-2864-18694



Glenbow Archives NA-2864-5787



Glenbow Archives NA-2864-6068



Glenbow Archives NA-2864-21537

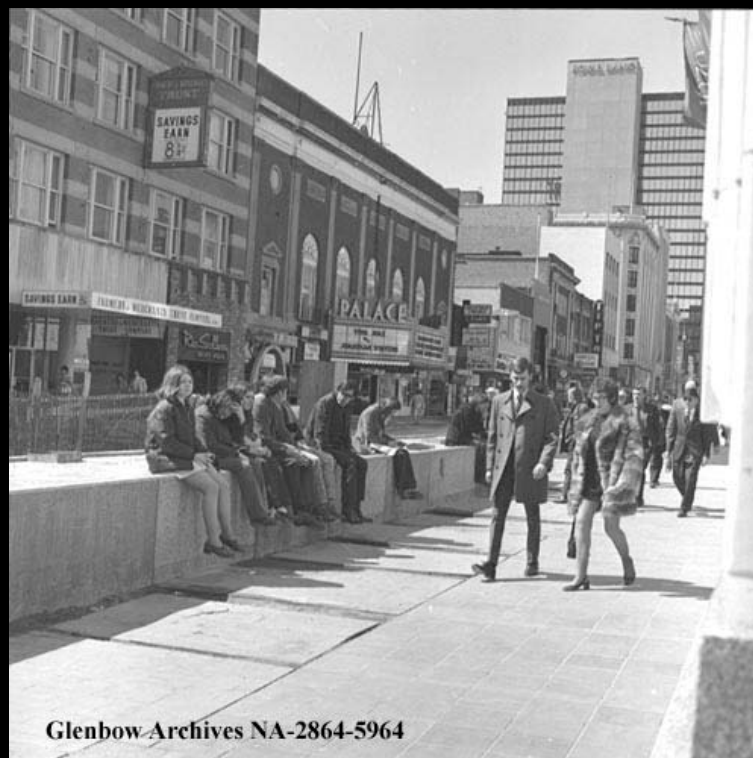




Glenbow Archives NA-2864-23486



Glenbow Archives  
NA-2864-5220



Glenbow Archives NA-2864-5964

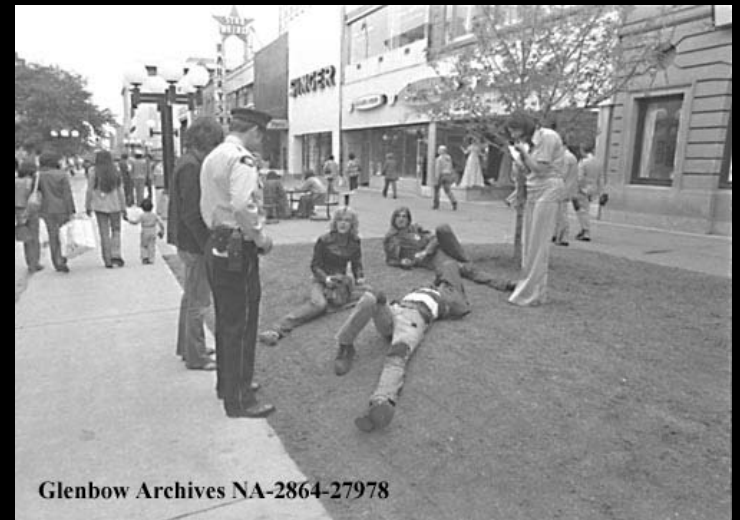


Glenbow Archives NA-5689-7-28

















































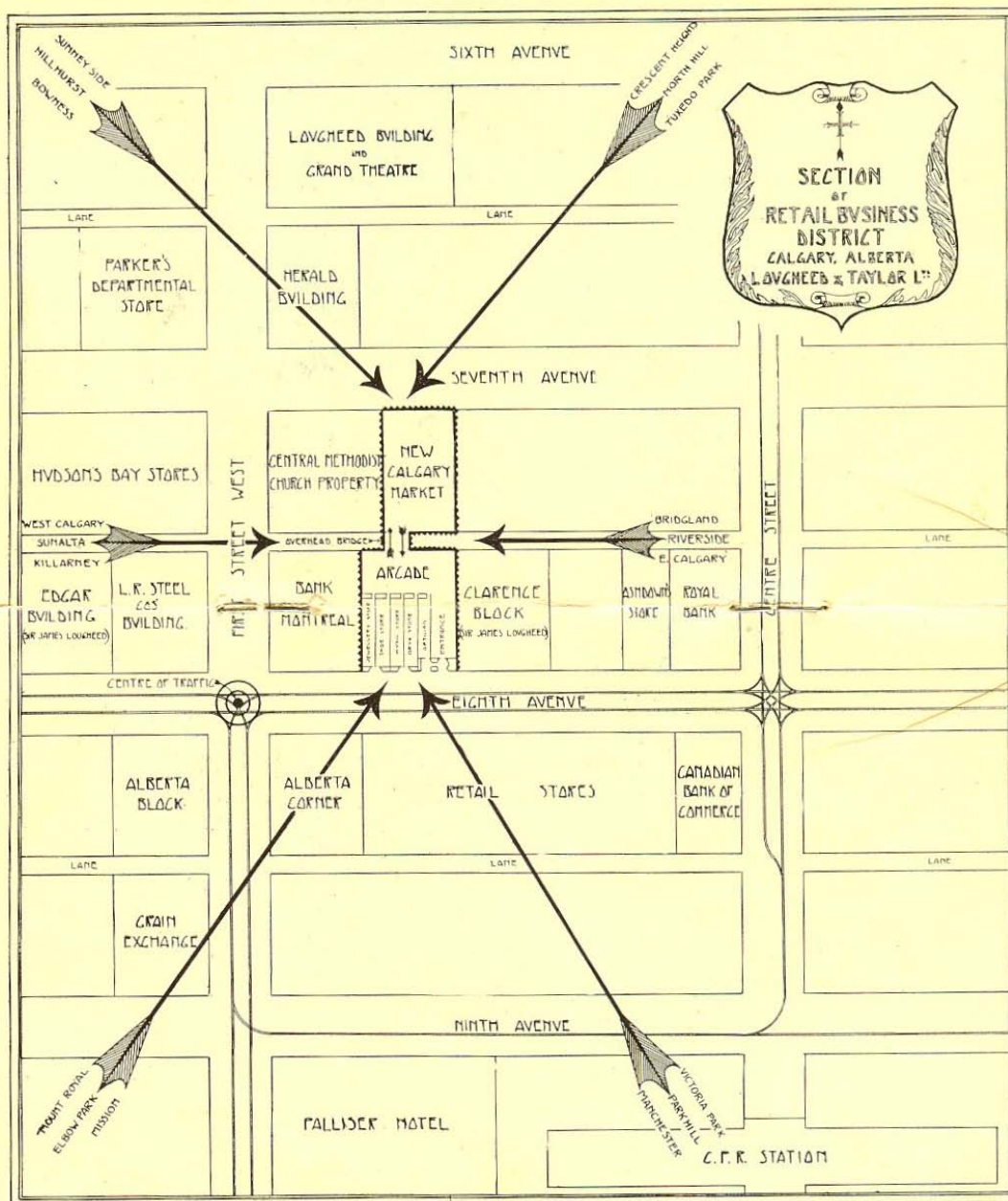


# Calgary's First +15 and Shopping Mall

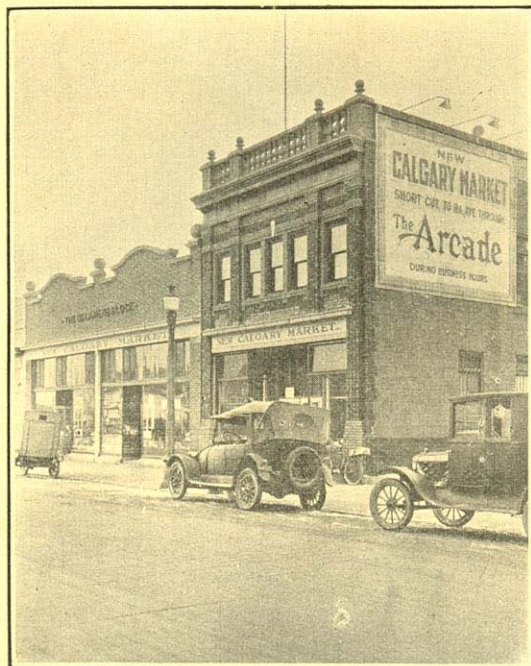








ALL ROADS LEAD TO THE ARCADE, IN THE CENTRE OF CALGARY'S RETAIL SHOPPING DISTRICT.

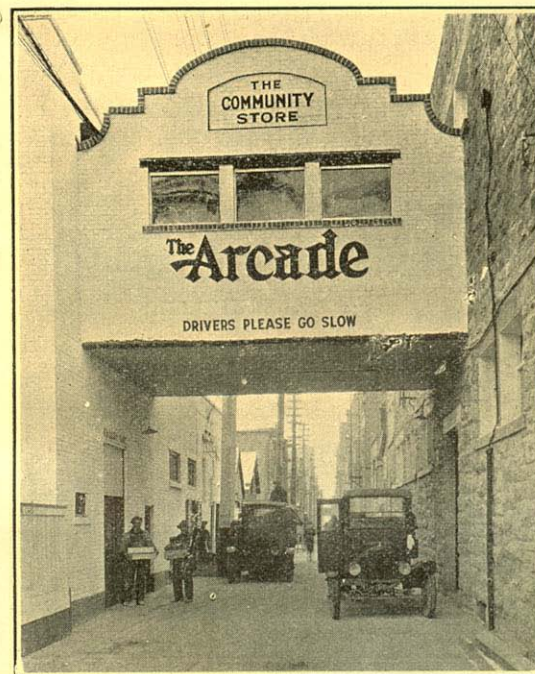


THE SEVENTH AVENUE ENTRANCE THROUGH THE  
MARKET SECTION.

An elevator has been provided to move incoming stock from the cartage drays to a general opening room, where it is distributed to the individual storage rooms. In a similar manner, a general delivery room has been provided where all goods are collected and

placed, awaiting delivery vans to take them to their destination.

The opening of the Calgary Arcade by the Acting Mayor of the City was attended by hundreds of interested visitors, and many of them for the first time saw and realized



THE CONNECTING OVER-HEAD BRIDGE JOINING THE SEVENTH  
AVENUE MARKET AND THE EIGHTH AVENUE ARCADE PROPER.





MAIN ENTRANCE ON EIGHTH AVENUE WEST











THANK YOU









You have to be an optimist to be a  
Heritage Planner.

Make everyone a Heritage  
Planner

Be the Developer's best  
friend.



We are not the heritage  
police.

You have to care, but not  
that much.

You can never be  
cynical enough.

Larry